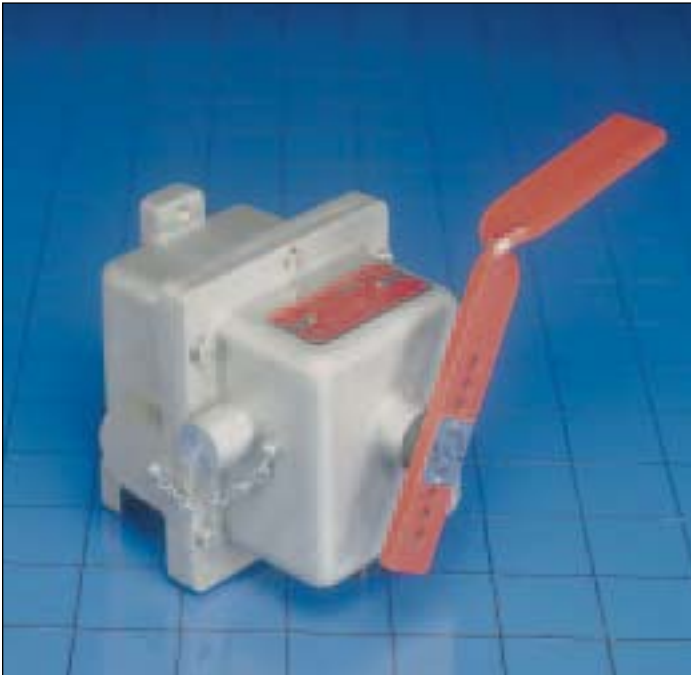


CABLE OPERATED SAFETY STOP SWITCH FOR CONVEYORS



WHAT IT IS AND DOES:

The Model RS is a rugged compact safety switch that provides a quick positive shut off of dangerous equipment in emergencies or normal operation. It is actuated by a cable pulled by endangered personnel. The output contacts of the Model RS can control up to two separate circuits, one for machinery shutdown and one for alarm.

WHY IS IT NECESSARY?

Safety minded operators of conveyors, production lines, elevator equipment, assembly lines, material handling systems, cranes, etc. consider it a must for employee protection. Most states have safety statutes that require these switches on conveyors and related equipment. American National Standard Institute recommends their use in ANSI standard No. ASME B20.1 -1993-5.11. This ANSI standard will probably soon become part of the Williams-Steiger Act of 1970 the OSHA Act.

PATENTED



LISTED

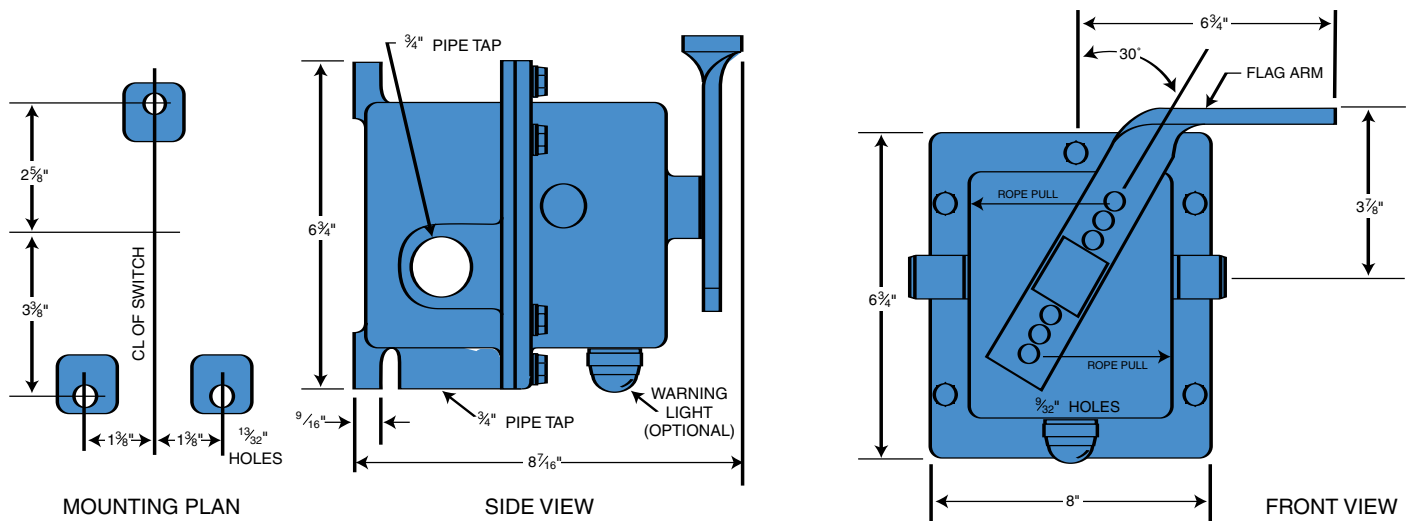
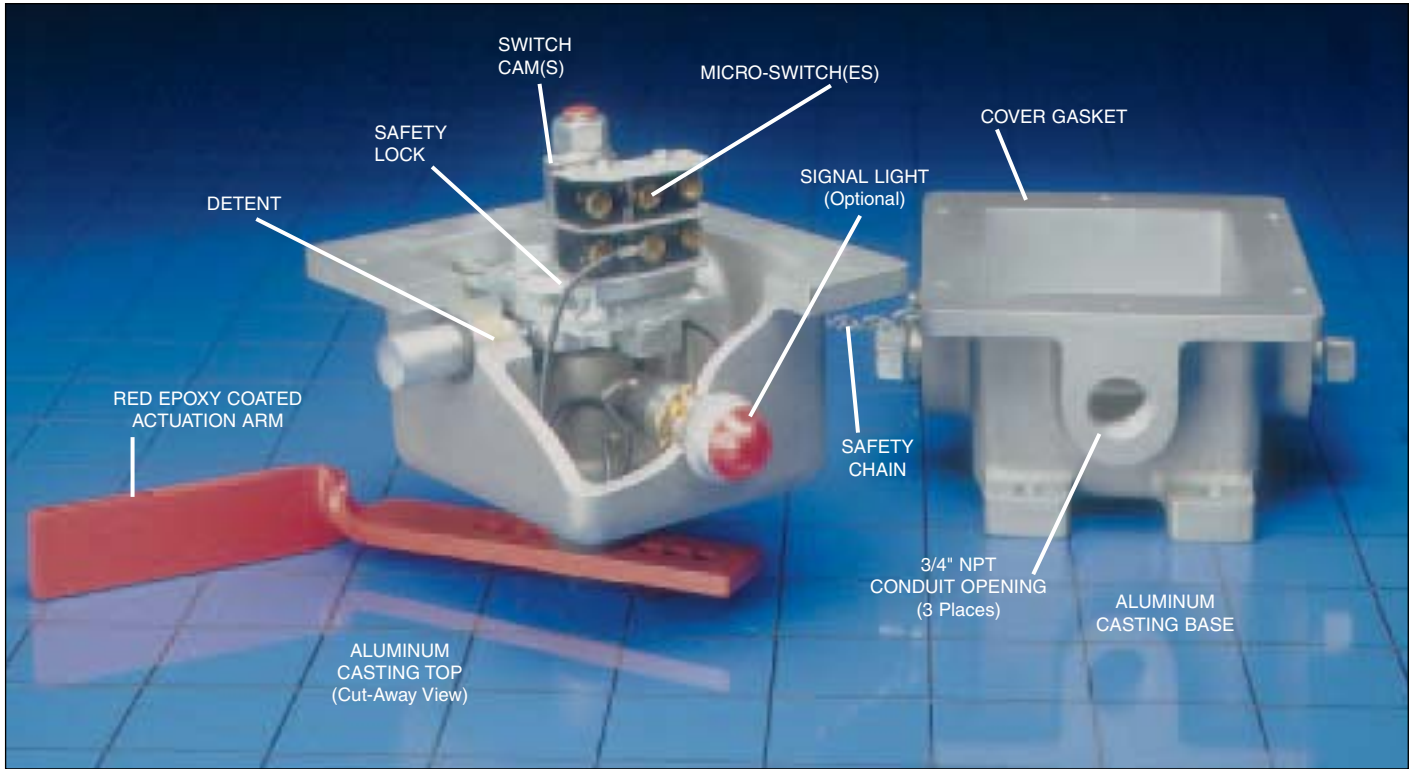


LISTED

EXCLUSIVE FEATURES

1. The Model RS is equipped with a positive safety lock. Having once been actuated, it cannot be accidentally reset causing dangerous equipment to restart. In order to reset the switch, the actuation arm must be pushed in and turned. It takes no longer and it makes this a true "safety" switch.
2. The Model RS is installed with cable extending in both directions from the actuating handle. There is one electrical connection inside. This simple arrangement eliminates the double electrical connections required in two ended units employing a separate micro switch for cable in each direction.
3. The actuation force required is simply adjusted in the field by a change in the position of the cable in holes provided in the actuation arm. One of our units will handle as much cable length as a double ended competitive unit and there is no longer a need to specify actuating force or right or left handed units.
4. The standard construction of the unit is a corrosion resistant aluminum housing complete with stainless steel hardware and red epoxy coated actuation handle. The actuation shaft is of stainless steel. Painted cast iron construction is available if necessary. Epoxy coating of either casting is also available if required.
5. The Model RS controls are listed by Underwriters Laboratories, Inc. and Canadian Standards Association. The general purpose models are listed for non-hazardous atmospheres. Explosion proof models are listed for use in hazardous atmospheres as defined by the National Electric Code handbook and the National Electrical Manufacturers Association Standards for NEMA 7 and 9 hazardous locations. Specifically, they are listed for Class I, Groups C and D; and Class II, Groups E, F, and G.
6. Model RS offers the lowest cost per foot of protection because it incorporates fewer switches and less wiring is required. Cable may be extended in either or both directions with no changes required in the internal mechanism of the unit and the wiring is still of a simple uncomplicated nature.
7. The switch is available with a warning light that may be wired to indicate actuation. This permits easy identification of actuated switches in areas where visual identification is difficult.
8. A special version of the unit is available for the mining industry. This unit is listed by the Mining Safety and Health Administration as complying with Schedule 2G. Our Listing No. is X/P-2140.

PULL CORD SWITCHES MODEL RS



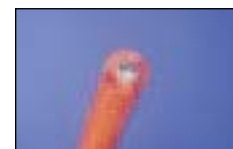
**CABLE SUPPORT
EYE BOLTS**

Plated 1/2" N.C. thread - two nuts and one lock-washer included.



CABLE END FITTINGS

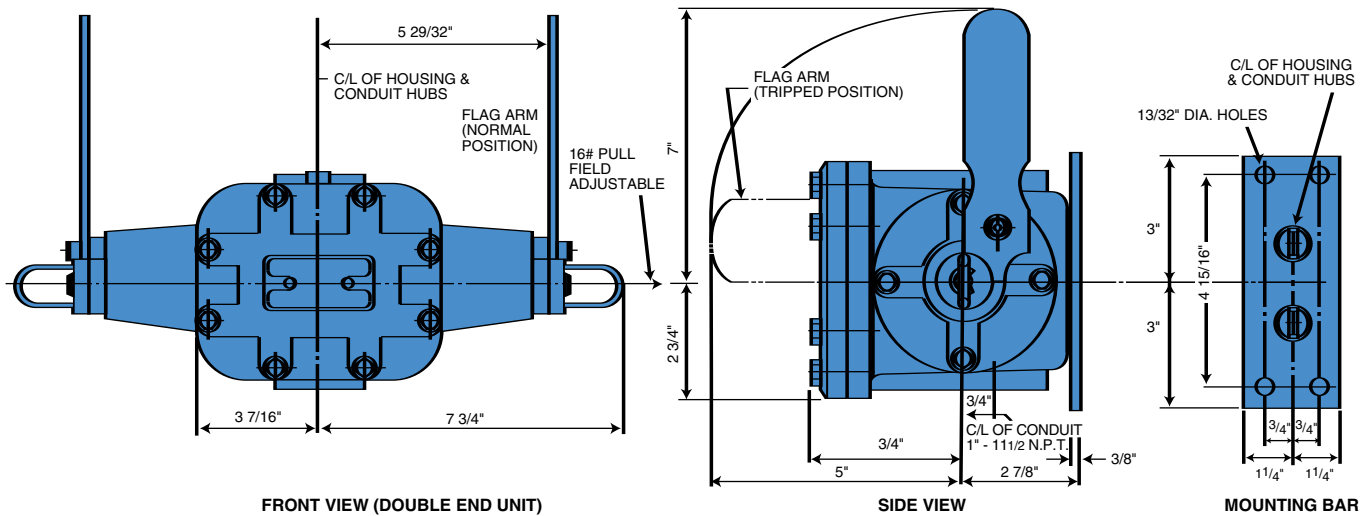
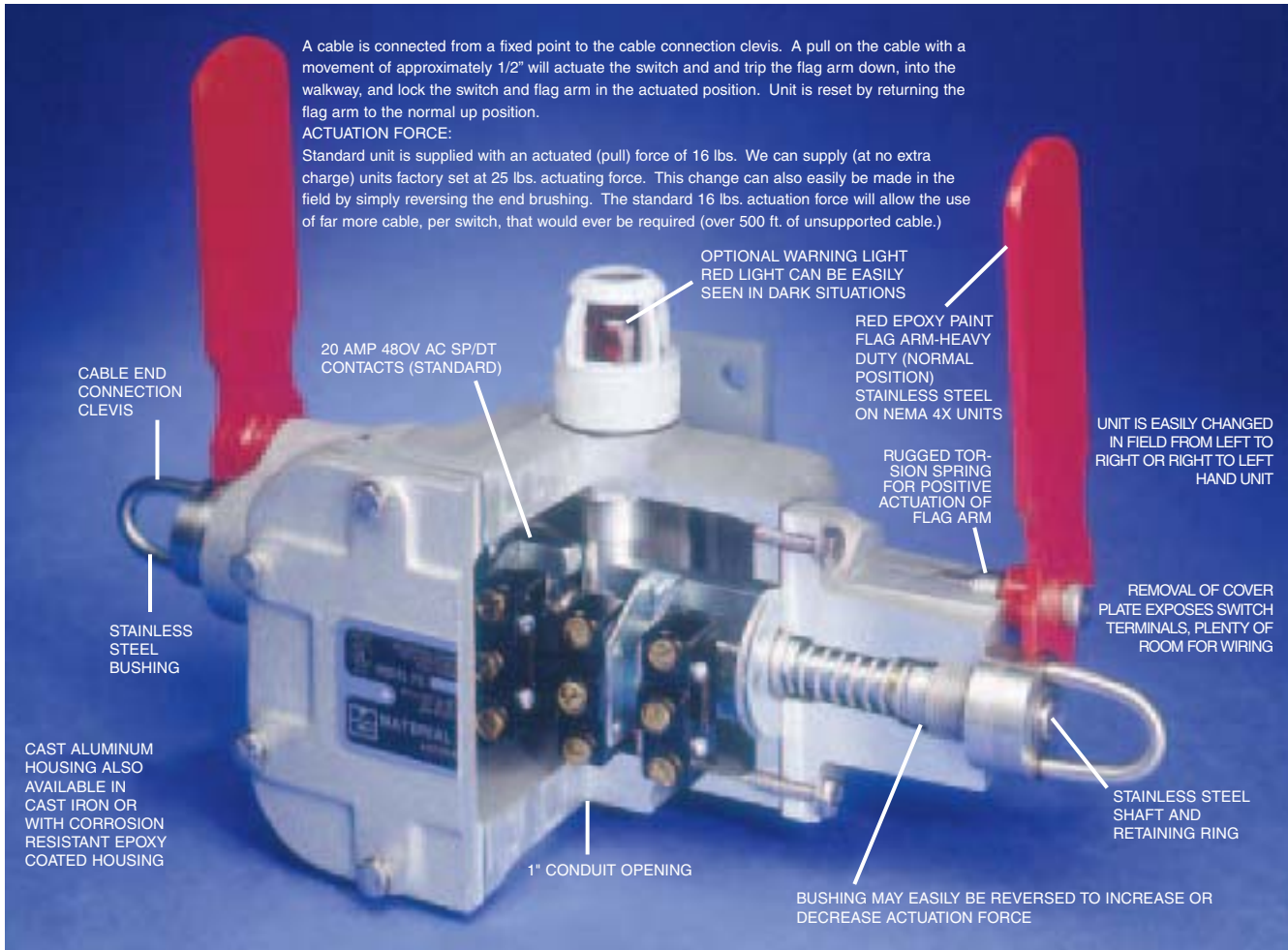
Forged steel saddle and steel U-bolt. Cadmium plated bolts and nuts.



**CABLE WITH ORANGE
PROTECTIVE COATING**

3/32 7 x 7 preformed galvanized aircraft cable 3/16" O.D. Vinyl coated.

OPERATION INFORMATION



1-SINGLE POLE
double throw micro switch
PCL-1S LEFT HAND
PCR-1S RIGHT HAND

TYPICAL USE:
Emergency shutdown of conveyors or other machinery
AVAILABLE OPTIONS:
• Hazardous locations
• Corrosive location

1-TWO CIRCUIT
double break micro switch for D.C. circuits
PCL-1T LEFT HAND
PCR-1T RIGHT HAND

TYPICAL USE:
Emergency shutdown of conveyors and other machinery
AVAILABLE OPTIONS:
• Hazardous locations
• Corrosive location