

'A' Style Distributor

'A' Style Distributor

STANDARD FEATURES

- Weatherproof and dust tight construction
- 4 to 32 outlets
- 10 gauge C1045 steel turnspout
- High-flo inner turnspout minimizes choking
- Inner turnspout is supported on a solid shaft (2" to 2 15/16") and stabilized by two heavy duty flange bearings to minimize deflection
- Inlet and outlet neoprene dust seals
- 12 gauge mild steel outlets
- 10 gauge mild steel inlets
- 14 gauge mild steel upper cone
- 12 gauge mild steel lower and inner cone
- 10 gauge mild steel bridge tree housing
- 40°, 45°, 50° and 60° slope available
- 1 coat of Strongco green primer
- Field convertible to electric drive
- Door in the upper cone for turnspout inspection
- Wrap around inspection panels on base allows easy access to drive components
- Inlet is one standard flange size larger than outlet to permit higher thru-put with low velocity, high volume input (except 26")
- Outlet supplied with standard heavy plate flanges

OPTIONAL FEATURES

- 10 gauge C1045 outlets
- 12 gauge mild steel replaceable half liners on outlets
- Outlet can be Stonhard or urethane lined for added life
- 10 gauge C1045 replaceable inlet
- Special inlet and outlet flanges
- Dual or triple turnspouts
- 3/16 MS, 1/4 MS, 3/16 AR or 1/4 AR turnspouts

OPTIONAL FEATURES con't

- Turnspout can be Stonhard or urethane lined
- Positive indication switch (manual only)
- Overflow and collector cone (manual only)
- Hanging brackets

STANDARD FEATURES FOR THE ELECTRIC MODELS

- CSA approved, Class II, Group G drive unit
- Dynamic brake loose (no enclosure)
- Panel mount DC100 Controller (no enclosure)
- Three phase or single phase power supply
- Disk encoded indexer assembly
- Minimum wiring requirements:
 - One 3 conductor feeder wire from the power source to distributor junction box
 - Four 12 Vdc - 1/2 Amp wires per single distributor for control

OPTIONAL FEATURES FOR THE ELECTRIC MODELS

- DC100 programmable control and dynamic brake are available in separate or common enclosures (Cema 1, 12, EEMAC 1, 9, 12)
- Spout location verification switch
- Computer or PLC interfacing
- Alpha-numeric control with programmable capabilities (refer to separate specification sheets)

FEATURES

Multiple turnspouts available

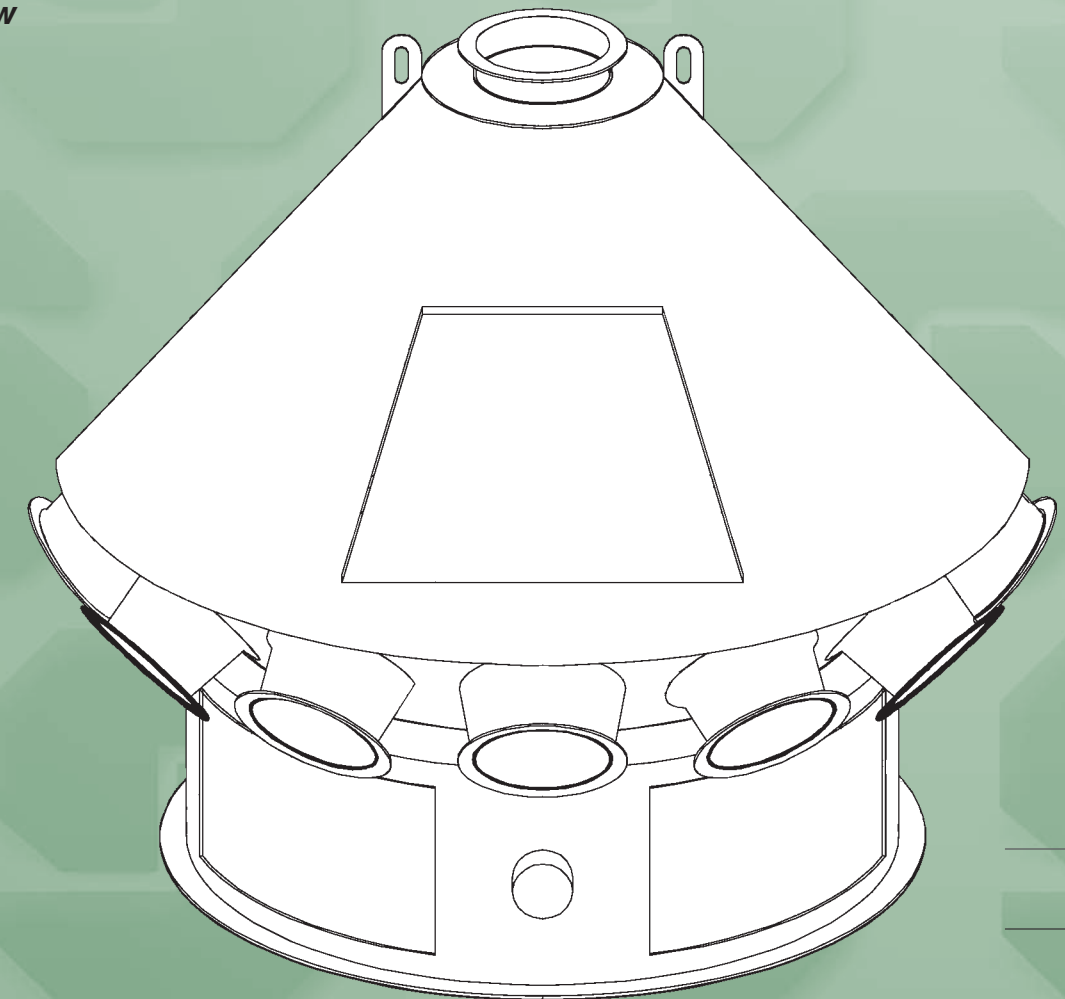
Round or square outlets

Special designs and sizes available

Electric or manual configuration

Heavy duty weather & dust tight construction

No overflow



Halifax

Montreal

Toronto

Winnipeg

Saskatoon

Calgary

Vancouver

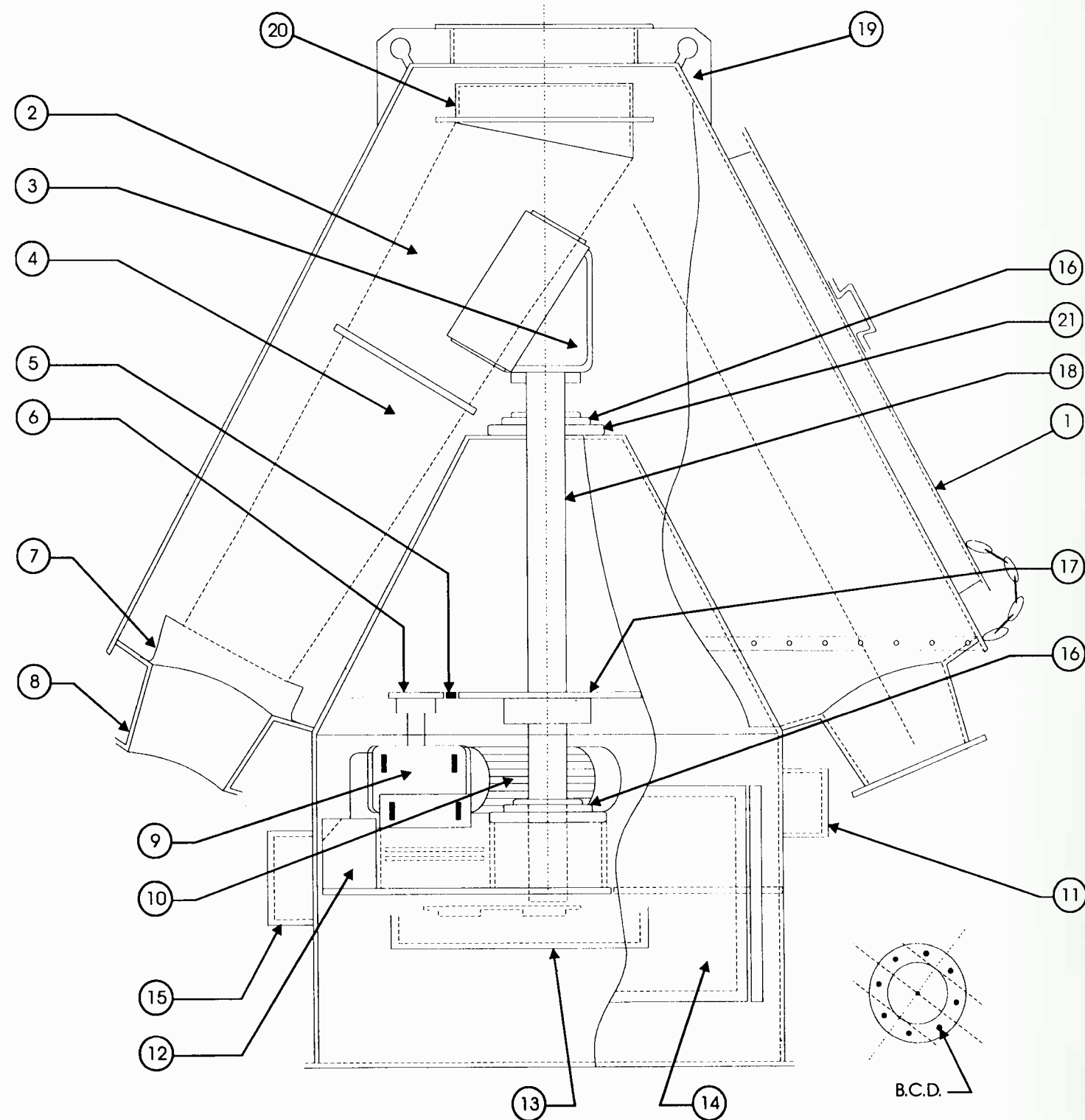


engineered systems inc.

STRONGCO ENGINEERED SYSTEMS INC. A SUBSIDIARY OF STRONGCO INC.

'A' Style Distributor

'A' Style Distributor



- 1 Access door
- 2 Turnspout, 10 gauge C1045
- 3 Saddle 1/4" mild steel
- 4 Turnspout extension, 10 gauge C1045
- 5 RC50 chain
- 6 Driver sprocket 7/8" bore
- 7 #50 neoprene 1/8" thick (lower seal)
- 8 Discharge cones 14 gauge mild steel
- 9 Reducer, Browning 206 CI-LR-60E, 60:1 ratio
- 10 1/2 HP, 1800 rpm motor, Class II, Group G
- 11 Low voltage box
- 12 Bridgetree, 3/16" MS
- 13 Opto indexer assembly
- 14 Access door
- 15 High voltage box
- 16 Flange bearing
- 17 Driven sprocket type-B hub
- 18 Main shaft
- 19 Lifting lug
- 20 Garage door gasket (upper seal)
- 21 3/4" thick flange welded to shaft (bearing pad)